



EQUESTRIAN TRAINING COLLECTION
SPRING / SUMMER 2024

LUISA BREECHES	4
JASMINE BREECHES.....	6
JOHANNA BREECHES.....	8
SIMON MEN'S BREECHES.....	10

ELAINE RIDING LEGGINGS.....	12
PAULINE 2.0 RIDING LEGGINGS.....	14
DEA RIDING LEGGINGS.....	16

JUICY POLO SHIRT.....	18
JUICE POLO SHIRT.....	20
DACY T-SHIRT.....	22
ZOIA T-SHIRT.....	24
PAULA LONGSLEEVE SHIRT.....	26
PAULA SS T-SHIRT.....	28

APOLEUS W-V SHINY RIDING HELMET.....	30
MADLI HELMET BAG	32

REVEL GLOVES	34
FLASH GLOVES	35
LUMI GLOVES	36
ASTI FLEUR GLOVES	37
ISTRIA GLOVES	38
LOLA GLOVES	39
SARANDA GLOVES	40
EIRA GLOVES	41
SOL GLOVES	42
ZEPHIRO GLOVES	43
GRIPPI SUMMER GLOVES	44

COMPETITION COLLECTION SS24	45
--	----

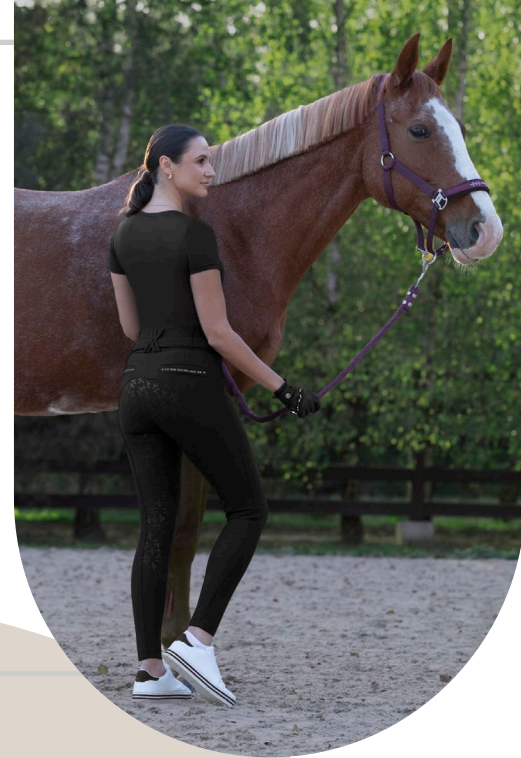




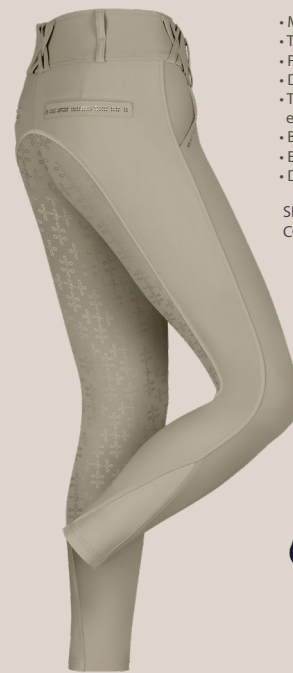
LUISA

BREECHES

Art. 01110



5252 - olive haze



3737 - tan



1212 - navy



1010 - black



0303 - white

- Medium waist and classic fit
- Tailored with 4-way stretch
- Full seat COMFISTICK™ technology grip
- Decorative belt loops at the waist
- Two spacious front pockets decorated with discreet embroidery with crystals
- Back pocket imitations decorated with crystals
- Elastic leg bottoms
- Decorated with Fair Play logo down the leg

SIZES: 34, 36, 38, 40, 42, 44

COLORS: olive haze, tan, navy, black, white



JASMINE

BREECHES
Art. 01186



3737 - tan



5252 - olive haze

- High waist, classic fit featuring a V-shape at the back
- Tailored, 4-way stretch
- Full seat COMFISTICK™ technology grip
- Elastic leg bottoms
- Two slanted, spacious front pockets
- Back pocket imitations
- High, close-fitting waist with belt loops

SIZES: 34, 36, 38, 40, 42, 44
COLORS: olive haze, tan, navy, black, white



1212 - navy



1010 - black



0303 - white



JOHANNA

BREECHES

Art. 01184 (FS) | Art. 01185 (KP)



1010 - black



1212 - navy



0303 - white

- Medium waist and classic fit
- Tailored with 4-way stretch
- Full seat or knee patch COMFISTICK™ technology grip
- Elastic leg bottoms
- Two spacious front pockets
- Back pocket imitations

SIZES: 34, 36, 38, 40, 42, 44
COLORS: navy, black, white



SIMON

MEN'S BREECHES
Art. 01171



- Sporty, classic men's breeches
- Made of a high quality, 4 way stretch, elastic fabric
- Two pockets on the front and two buttoned pockets finished with an elegant Fair Play button on the back
- Non-slip elastic waist band with silicone on the inside
- Knee patch, durable silicone print with Fair Play logo ensures perfect grip
- Elastic inserts at the bottom of the legs
- Fair Play logo on the left leg

SIZES: 44, 46, 48, 50, 52, 54

COLORS: olive haze, tan, navy, black, white



3737 - tan

5252 - olive haze

1212 - navy

1010 - black

0303 - white



ELAINE

SEAMLESS RIDING LEGGINGS
Art. 03289



1010 - black



1212 - navy

- Innovative seamless riding leggings, combining sensational body shaping with comfort and perfect design
- Ultimate second skin feel thanks to incredibly pleasant to the touch fabric
- A high, strong belt, modeling the waist and belly, does not stick out and keeps the riding leggings in place
- Full seat silicone grip covered with durable COMFISTICK™ gel
- Two deep side pockets for a mobile phone
- Decorated with a Fair Play logo on the pocket

SIZES: 34, 36, 38, 40, 42, 44
YOUTH SIZES: 134, 140, 146, 152, 158, 164
COLORS: black, navy



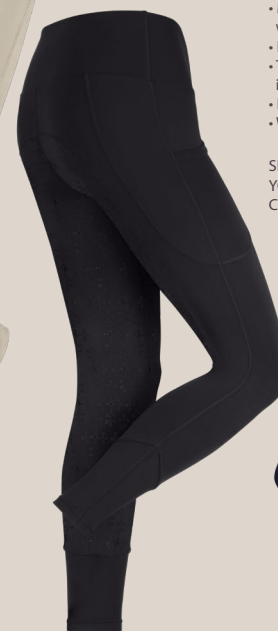
PAULINE

2.0

RIDING LEGGINGS
Art. 03287



3737 - tan



1010 - black



1212 - navy



0303 - white

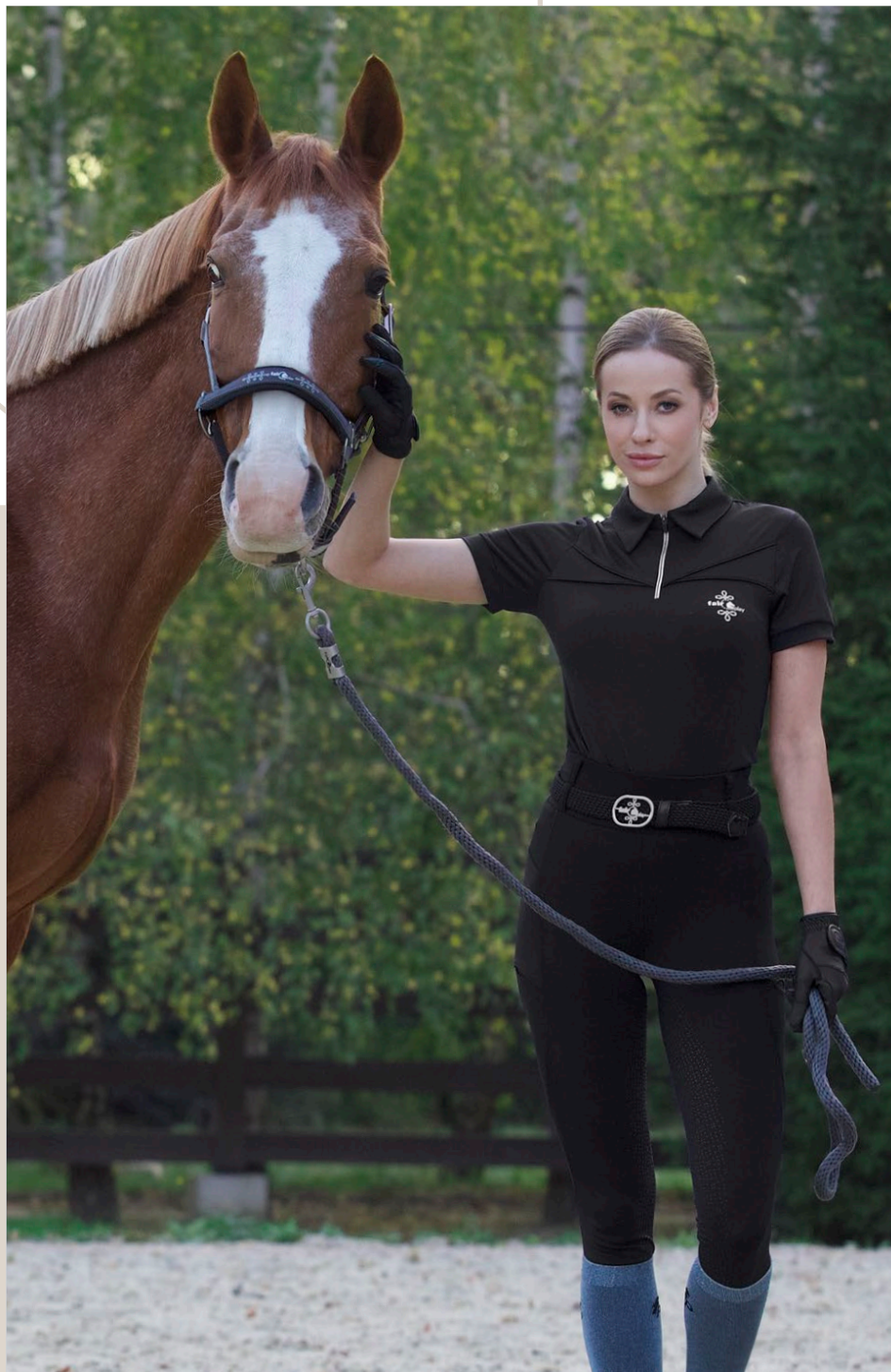
- An improved version of the Pauline model
- Perfectly fitting, high-waist riding leggings
- New strong waist shaping belt, without elastic inside
- Made of new, breathable, quick-drying recycled knitwear with UV protection
- Full seat COMFISTICK™ technology grip
- Two side pockets for a mobile phone, narrower than in the previous model
- Extremely flat seams thanks to flatlock stitching
- Waist circumference adjustment in children's sizes for a better fit

SIZES: 34, 36, 38, 40, 42, 44

YOUTH SIZES: 134, 140, 146, 152, 158, 164

COLORS: tan, black, navy

ALSO AVAILABLE:
PAULINE
COMPETITION
Art. 03288



DEA

RIDING LEGGINGS
Art. 03285



1212 - navy

3737 - tan

- Riding leggings with an interesting cut, made of breathable, quick-drying recycled knitwear with UVP
- They are not see-through thanks to the high-quality fabric
- Absence of seams in the front, close to the knees for increased comfort
- Soft, durable and perfectly 'grippy' full seat COMFISTICK™ technology grip
- Wide waistband with five belt loops for a perfect fit
- Two deep mobile phone pockets on the sides
- Perforated knit inserts on the legs for even better air permeability
- Adjustment waist circumference in children's sizes for a better fit
- Fair Play logo on the left pocket

SIZES: 34, 36, 38, 40, 42, 44
YOUTH SIZES: 134, 140, 146, 152, 158, 164
COLORS: tan, black, navy



1010 - black

0303 - white

ALSO AVAILABLE:
DEA COMPETITION
Art. 03286



JUICY

POLO SHIRT
Art. 09774

- Sporty, training polo shirt in vivid colors
- Made of an elastic, breathable and quick drying pique fabric
- Fastened with a zipper at the front
- Decorative Fair Play Logo on the front

SIZES: 34, 36, 38, 40, 42, 44

COLORS: aquamarine, royal yellow, apricote crush



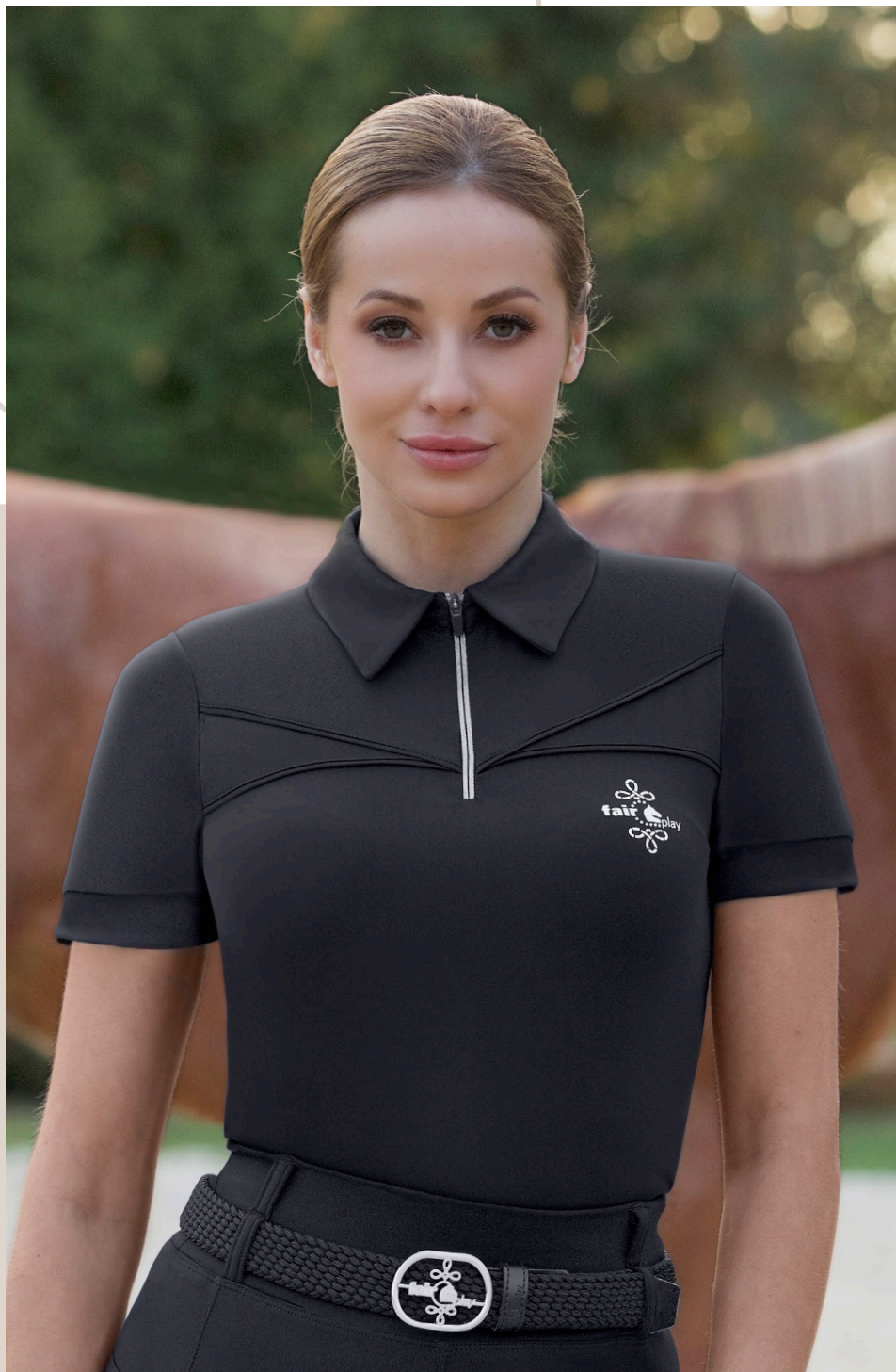
8181 - aquamarine



8080 - royal yellow

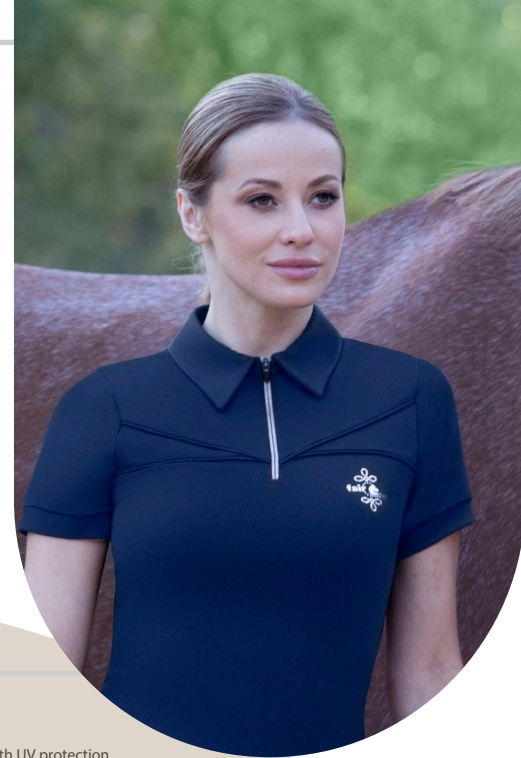


7676 - apricote crush



JUICE

POLO SHIRT
Art. 09773



- Sporty, training polo shirt
- Made of an elastic, breathable and quick drying recycled fabric with UV protection
- Fastened with a zipper at the front
- Decorative Fair Play logo on the front

SIZES: 34, 36, 38, 40, 42, 44
COLORS: olive haze, navy, black



5252 - olive haze



1212 - navy



1010 - black



DACY

T-SHIRT
Art. 09775

- Sporty, functional T-shirt
- Made of an ultra-light, breathable, quick-dry recycled fabric with UV protection
- Neckline decorated with discreet rhinestones
- Decorative Fair Play logo on the front

SIZES: 34, 36, 38, 40, 42, 44
YOUTH SIZES: 140, 152, 158, 164
COLORS: olive haze, navy, black, apricote crush



1212 - navy

7676 - apricote crush

1010 - black

5252 - olive haze



ZOIA

T-SHIRT
Art. 09776



- Sporty, functional training T-shirt
- Made of an ultra-light, breathable, quick-dry recycled fabric with UV protection
- Half back, sleeves and front inserts made of perforated fabric for better air circulation
- Decorative Fair Play logo on the front

SIZES: 34, 36, 38, 40, 42, 44

COLORS: olive haze, navy, black, steel blue, dusty pink



5252 - olive haze

1717 - dusty pink



3232 - steel blue

1212 - navy

1010 - black



PAULA

LONGSLEEVE SHIRT

Art. 09706



- Functional long-sleeve training shirt (and competition shirt in white color)
- Zipped stand-up collar
- Light, second skin fit
- Made of an elastic, breathable and quick drying jersey fabric with UVP 30
- Perforated fabric inserts on the sleeves and sides for increased air flow

SIZES: 34, 36, 38, 40, 42, 44, 46

YOUTH SIZES: 140, 152, 158, 164

COLORS: olive haze, burgundy, navy, black, steel blue, dusty pink, white (COMPETITION), taupe grey (AVAILABLE IN ADULTS SIZES)





PAULASS

T-SHIRT
Art. 09733



- Functional short sleeve shirt
- Zipped stand-up collar
- Light, second skin fit
- Made of an elastic, breathable and quick drying jersey fabric with UV protection
- Perforated fabric inserts on the sleeves and sides for increased air flow

SIZES: 34, 36, 38, 40, 42, 44
YOUTH SIZES: 140, 152, 158, 164
COLORS: olive haze, burgundy (AVAILABLE IN ADULTS SIZES),
navy, black, steel blue, dusty pink, taupe grey (AVAILABLE IN ADULTS SIZES),
white (COMPETITION)



5252 - olive haze

5555 - burgundy



1212 - navy

1010 - black

3232 - steel blue

1717 - dusty pink

0303 - white

4747 - taupe grey



APOLEUS W-V SHINY

RIDING HELMET
Art. 05143

- Modern, aerodynamically finished riding helmet
- The shell of the helmet has a high gloss varnish while the frame is decorated with rhinestones
- Very comfortable also thanks to the memory foam lining
- Knob for head circumference adjustment
- 3-point regulation system
- Effective but discreet ventilation system (air holes at the front and back side)
- Detachable and washable lining
- Flexible peak that absorbs part of the impact force
- Made of a high shock and impact absorbing material with further increased protective abilities thanks to the use of patented impact absorbing half-balls in the EPS shell
- Strengthening ribs protect against the pressure from lateral deformation
- Decorative Fair Play logo on the front
- Conforms to the safety standard: EN 1384:2023
- Weight: (±50g) S-480g, M-520g, L-560g

SIZES: S (52-54cm), M (55-57cm), L (58-60cm)

COLORS: royal berry, brown, navy, black





MAD LI

HELMET BAG

Art. 05144

- Stylish bag for storing a helmet and belongings
- Made of a very stiff fabric, resistant to rain and mechanical damage
- Finished with piping cord to retain its shape
- Internally lined with a breathable and quick-drying mesh lining
- 4 vents at the bottom for better air circulation
- Closed with a double-sided zipper
- Equipped with two pockets, one with a zipper and the other made of mesh, for riding gloves
- Extra flexible, adjustable shoulder strap
- Decorated with a Fair Play logo
- One size fits all women's, men's and children's helmets

SIZES: ONE SIZE | H: 24cm, L: 35 cm, W: 25 cm

COLORS: graphite



REVEL

GLOVES
Art. 06114



- Palm and reinforcements made of thin, non-slip, synthetic suede
- Upper part made of a functional, sun-protective (minimum UVP 30+) fabric
This feature withstands numerous washing
- Touchscreen friendly (only in black and navy)
- Extremely flexible, second skin fit
- Adjustable in the wrist

SIZES: XS, S, M, L, XL
COLORS: white, navy, black



0303 - white



1010 - black



1212 - navy

FLASH

GLOVES
Art. 06116



- Palm and reinforcements made of thin, non-slip, synthetic leather
- Upper part made of elastic, breathable mesh
- Touchscreen friendly (black and navy only)
- Decorated with sparkling crystals
- Adjustable in the wrist

SIZES: XS, S, M, L, XL
COLORS: white, navy, black



0303 - white



1212 - navy



1010 - black

LUMI

GLOVES
Art. 06115



- Palm and reinforcements made of thin, non-slip, synthetic leather
- Upper part made of elastic, breathable mesh with silver dots
- Touchscreen friendly
- Horseshoe-shaped decoration at the bottom

SIZES: XS, S, M, L, XL
COLORS: white, navy, black



0303 - white



1010 - black



1212 - navy

ASTIFLEUR

GLOVES
Art. 06109



- Made of thin, synthetic leather
- Touchscreen friendly (black & navy)
- Decorative embroidery with jets along the pinkie
- Adjustable in the wrist

SIZES: XS, S, M, L, XL
COLORS: white, navy, black



0303 - white



1212 - navy



1010 - black

ISTRIA

GLOVES
Art. 06103



- Sporty and comfortable gloves made of the highest quality materials
- Breathable and anti-slip
- Palm with silicone print, outer palm made of a thin, breathable mesh
- Adjustable at the wrist
- Touchscreen friendly

SIZES: XS, S, M, L, XL
COLORS: navy-steel blue, black-taupe grey, black



3212 - navy-steel blue



4710 - black-taupe grey



1010 - black

LOLA

GLOVES
Art. 06097



- Made of synthetic leather
- Breathable and anti-slip
- Outer palm made of a thin, breathable mesh
- Decorated with piping with Fair Play logo
- Adjustable in the wrist
- Touchscreen friendly (only black & navy)

SIZES: XS, S, M, L, XL, YOUTH: 8, 10, 12 years
COLORS: white, navy, black



0303 - white



1212 - navy



1010 - black

SARANDA

GLOVES
Art. 06104



- Made of an elastic fabric with mesh inserts
- Breathable and anti-slip
- Anti-slip print on the inner palm
- Adjustable at the wrist
- Touchscreen friendly (black&navy)
- Decorated with piping with a Fair Play logo

SIZES: XS, S, M, L, XL
COLORS: white, navy, black



0303 - white



1010 - black



1212 - navy

EIRA

GLOVES
Art. 06091



- Made of an elastic fabric with mesh inserts
- Breathable and anti-slip
- Anti-slip print on the inner palm
- Adjustable at the wrist

SIZES: XS, S, M, L, XL, YOUTH: 8, 10, 12 years
COLORS: navy-grey, black-grey



1112 - navy-grey



1110 - black-grey

SOL

GLOVES
Art. 06092



- Made of thin, synthetic leather
- Outer palm features a thin, breathable mesh
- Decorative glitter horseshoe
- Touchscreen friendly (only black&navy)

SIZES: XS, S, M, L, XL, YOUTH: 8, 10, 12 years
COLORS: white, navy, black



0303 - white



1010 - black



1212 - navy

ZEPHIRO

GLOVES
Art. 06087



- Made of synthetic leather
- Breathable and anti-slip
- Outer palm made of a thin, breathable mesh
- Adjustable at the wrist
- Touchscreen friendly

SIZES: XS, S, M, L, XL, YOUTH: 8, 10, 12 years
COLORS: black, navy



1010 - black



1212 - navy

GRIPPI SUMMER

GLOVES
Art. 06060

- Made of synthetic leather
- Breathable and anti-slip
- Outer palm made of a thin, breathable mesh
- Adjustable at the wrist
- Touchscreen friendly

SIZES: XS, S, M, L, XL, YOUTH: 8, 10, 12 years
COLORS: black



1010 - black



COMPETITION COLLECTION

SPRING/SUMMER 2024





LIST OF SHOPS:



www.fair-play.pl

[f /Equestrian.Fair.Play](https://www.facebook.com/Equestrian.Fair.Play) [@ /fairplay_horsefashion](https://www.instagram.com/fairplay_horsefashion)

DISCOVER MORE

